

Teacher Assessments and provisional examination results 2017

Wellbeing Impact Assessment Report

This report summarises the likely impact of a proposal on the social, economic, environmental and cultural well-being of Denbighshire, Wales and the world.

| | |
|--------------------------------------|------------------------------------------------------------------------|
| Assessment Number: | 293 |
| Brief description: | Teacher Assessments and provisional examination results September 2017 |
| Date Completed: | 14/09/2017 13:30:44 Version: 2 |
| Completed by: | Julian Molloy |
| Responsible Service: | Education & Children Services |
| Localities affected by the proposal: | Whole County, |

IMPACT ASSESSMENT SUMMARY AND CONCLUSION

Before we look in detail at the contribution and impact of the proposal, it is important to consider how the proposal is applying the sustainable development principle. This means that we must act "in a manner which seeks to ensure that the needs of the present are met without compromising the ability of future generations to meet their own needs."

Score for the sustainability of the approach

Could you do more to make your approach more sustainable?

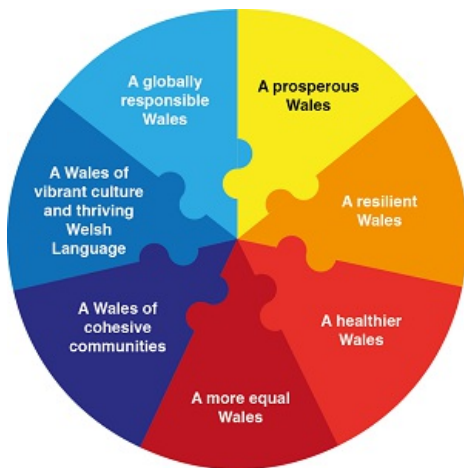


(2 out of 4 stars)

Actual score : 11 / 24.

Summary of impact

Wellbeing Goals



| | |
|---------------------------------------------------------------|----------|
| A globally responsible Wales | Negative |
| A prosperous Denbighshire | Positive |
| A resilient Denbighshire | Neutral |
| A healthier Denbighshire | Positive |
| A more equal Denbighshire | Neutral |
| A Denbighshire of cohesive communities | Neutral |
| A Denbighshire of vibrant culture and thriving Welsh language | Positive |
| A globally responsible Denbighshire | Negative |

Main conclusions

After 5 years of improving teacher assessments and examination results, the decline in results this year will impact negatively on young people progressing to higher education and high quality employment in Denbighshire.

THE LIKELY IMPACT ON DENBIGHSHIRE, WALES AND THE WORLD

A prosperous Denbighshire

| | |
|--------------------------|-------------------------------------------------------------------------------------------------------------------------------------------------------------------------------------------------------------------------------------------|
| Overall Impact | Negative |
| Justification for impact | This years teacher assessments and examination results are below expected levels which negatively impacts on young people chances of gaining the skills and further qualifications needed to meet their's and Denbighshire's aspirations. |

Positive consequences identified:

Children leave schools with the skills and qualifications to successfully contribute to the economy of Denbighshire
Children leave schools with the skills and qualifications to access high quality employment opportunities in Denbighshire
Children leave schools with the skills and qualifications to successfully progress to further education or employment..

Unintended negative consequences identified:

Children leave schools without the skills and qualifications to successfully contribute to the economy of Denbighshire
Children leave schools without the skills and qualifications to successfully progress to further education or employment..

Mitigating actions:

Work with and closely monitor GwE and schools to measure progress and performance

A resilient Denbighshire

| | |
|--------------------------|--|
| Overall Impact | |
| Justification for impact | |

Positive consequences identified:

Unintended negative consequences identified:

Mitigating actions:

A healthier Denbighshire

| | |
|--------------------------|-------------------------------------------------------------------------------------------------------------------------------------------|
| Overall Impact | Positive |
| Justification for impact | Estyn inspection report indicate that most Denbighshire schools provide good support for their pupils that contributes to their learning. |

Positive consequences identified:

Skills learnt in schools to identify and prepare healthy meals
Skills learnt in schools to participate and enjoy leisure opportunities
Continued access to education and employment at an appropriate level
Good schools provide appropriate access to health services

Unintended negative consequences identified:

Poor attendance or engagement at school many not provide the skills to identify and prepare healthy meals
Poor attendance or engagement at school many not provide the skills to to participate and enjoy leisure opportunities
Not have the skills and qualifications to lead a fulfilling life.
Some schools don't always provide appropriate access to health services

Mitigating actions:

Support schools through healthy schools initiatives, school sports opportunities and closely monitor progress

A more equal Denbighshire

| | |
|--------------------------|---------------------------------------------------------------------------------------------------------|
| Overall Impact | Neutral |
| Justification for impact | The performance of FSM pupils was below regional standards and likely to be below national expectations |

Positive consequences identified:

Use of grants and initiatives to support FSM and vulnerable children, examples of successful interventions in most schools
Working with health and Children's Services to support vulnerable children and their families.
Use of grants and initiatives to support FSM and vulnerable children, examples of successful interventions in most schools that lead to successful outcomes.

Unintended negative consequences identified:

Underachievement of many FSM and vulnerable pupils and risk of becoming NEET.

Mitigating actions:

Work with GwE and schools to closely monitor FSM pupils progress and the effective use of the PDG.

A Denbighshire of cohesive communities

| | |
|--------------------------|---------|
| Overall Impact | Neutral |
| Justification for impact | |

Positive consequences identified:

Young people with skills and qualification are more likely to make a positive contribution to their communities,
Young people with skills and qualification are more likely to make a positive contribution to their communities,

Unintended negative consequences identified:

Young people without skills and qualification are more likely to make a negative impact on their communities,
Young people without skills and qualification are more likely to make a negative impact on their communities,

Mitigating actions:

Work with GwE and schools to closely monitor FSM pupils progress and the effective use of the PDG.

A Denbighshire of vibrant culture and thriving Welsh language

| | |
|--------------------------|--------------------------------------------------------------------------------------------------------------------------------------------|
| Overall Impact | Positive |
| Justification for impact | Expansion of Welsh medium schools has led to more pupils learning Welsh and will lead to more pupils achieving higher level qualifications |

Positive consequences identified:

Young people with Welsh language skills and qualification are likely to use the language socially and in work. Welsh medium schools are focusing on encouraging pupils to use Welsh outside 6th classroom
The recent expansion of Welsh medium schools has led to more pupils learning Welsh and will lead to more pupils achieving higher level qualifications
Schools teach children about the culture and heritage of Wales. Most children have access to a wide range of activities by the Urdd.

Unintended negative consequences identified:

The format of many qualifications in Welsh can have a negative impact on pupils attitude to using Welsh.
Children not accessing activities by the Urdd. for various reasons

Mitigating actions:

The new curriculum and qualifications will support the development of Welsh language skills for all pupils

A globally responsible Denbighshire

| | |
|--------------------------|--|
| Overall Impact | |
| Justification for impact | |

Positive consequences identified:

Unintended negative consequences identified:

A need to achieve higher PISA scores to attract more inward investment into Denbighshire

Mitigating actions: